



— EXPRESS SERIES SPECIFICATIONS GUIDE —

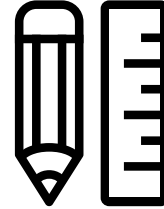


**THOUGHTFULLY CRAFTED**  
TO SUIT ANY STYLE

# TABLE OF CONTENTS

ITEM	SECTION
Information	A
Material Specifications	A
Cabinet Specifications	A
Door & Drawer Reveal Dimensions	A
Cabinet Dimensions	A
Door Styles & Finishes	B
Base Cabinets	C
Wall Cabinets	D
Tall Cabinets	E
Vanities	F
ADA Cabinets	G
Fillers, Panels & Accessories	H
Cabinet Adjustments	I
Quality & Care Guide	J
Warranty	K
Minnesota Disclosure Health Notice	L

# INFORMATION



## REACH OUT

You can reach out to **[studiodesigncabinets@magickwoods.com](mailto:studiodesigncabinets@magickwoods.com)** or call **(844) 877-0002** to begin your registration process.

## FREE DESIGN

We offer quick turnaround project and custom room layout designs!



## SHIPPING

Cabinets ship fully assembled and ready to be installed. We can handle any type of orders, whether it's a kitchen at a time or a full truckload. Contact your field representative for details.



## WARRANTY

Our kitchen and bath cabinets are covered under our limited lifetime warranty. For more details, visit **[www.flooranddecor.com](http://www.flooranddecor.com)** or contact us at **[studiodesigncabinets@magickwoods.com](mailto:studiodesigncabinets@magickwoods.com)** or call **(844) 877-0002**.

# MATERIAL SPECIFICATIONS

## MATERIAL CHARACTERISTICS:

We offer a diverse selection of materials, including premium painted MDF and stained poplar wood. All our paints and stains are finished with a UV-protective topcoat, which helps slow aging and fading caused by sun exposure.

Our natural wood option showcases the unique grain patterns and color variations that reflect the environment in which the wood grew. Factors such as soil minerals, climate, and moisture influence these characteristics, resulting in one-of-a-kind cabinetry pieces. While we carefully match wood during production, the inherent variations mean no two pieces will ever be identical in pattern or hue.

Wood is a living material and may expand or contract with changes in humidity and temperature—natural behaviors that highlight its authenticity rather than defects. Our premium stains and high-quality finishes enhance the beauty of the wood and protect it against daily wear. Over time, exposure to light may deepen the wood's color, a normal and expected process.

Our engineered MDF material is designed for durability and easy care, offering alternatives that are resistant to warping, scratches, and stains. For optimal results, we recommend regularly updating product samples to reflect natural changes over time and following proper care guidelines to maintain the longevity of your cabinetry. Variations in natural materials are part of their charm and are not grounds for replacement or credit.

As part of our commitment to continuous improvement, we may refine design specifications and materials as needed. Any alternative materials selected will be of equal or superior quality, ensuring our high standards are upheld.

## MDF

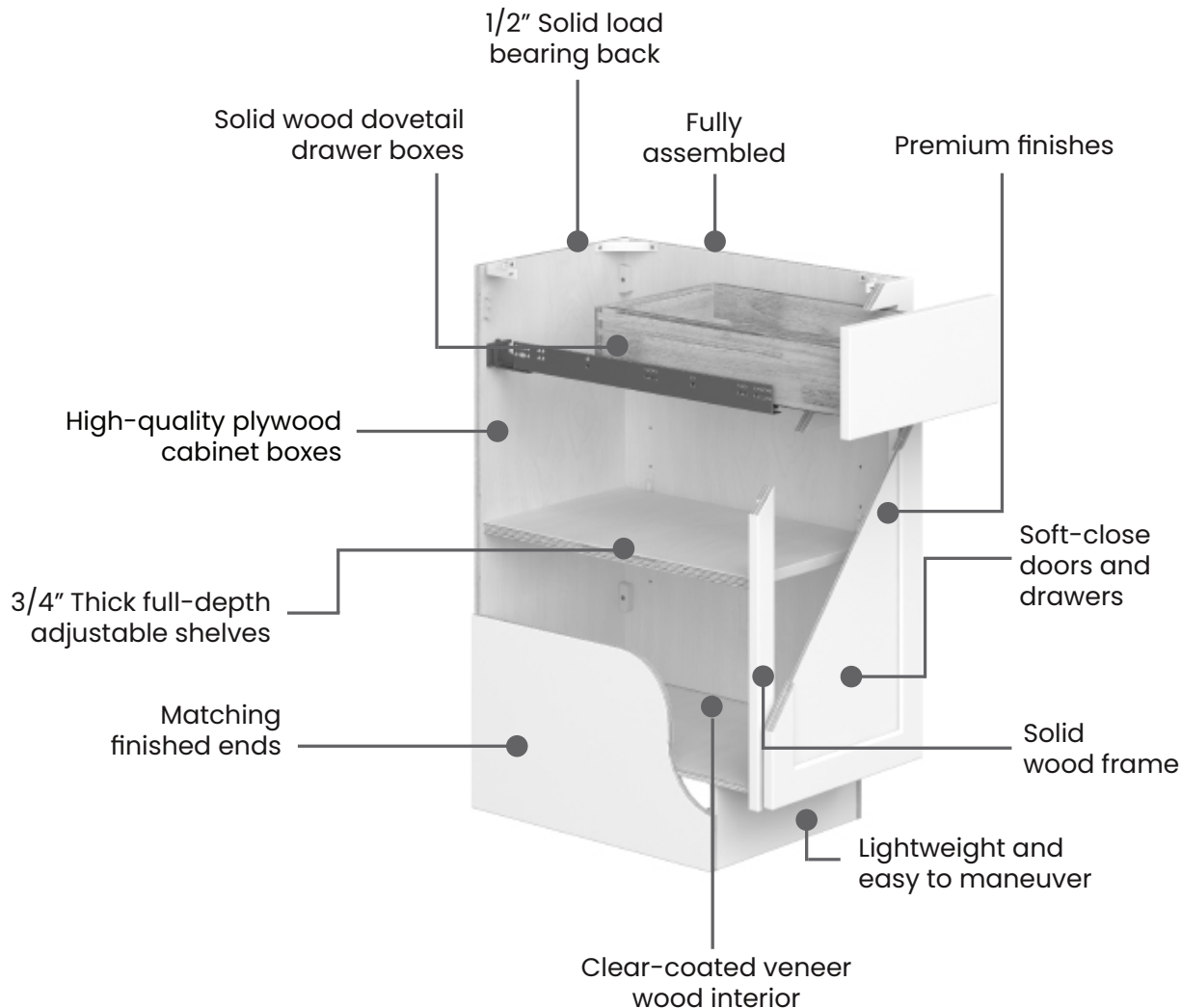
Our five-piece MDF doors are expertly shaped using precision routers and advanced tooling to create exact profiles and clean, defined edges. Each door is finished with premium polyurethane paint, delivering a smooth, durable surface that resists wear and maintains its polished look over time. This process ensures a high-quality product that combines precision craftsmanship with lasting performance.

## POPLAR

Poplar wood is recognized for its fine, straight grain and smooth texture, typically showcasing a light, pale yellow to creamy white color. Its subtle greenish or brownish undertones can sometimes create a gentle contrast, adding depth to its otherwise uniform appearance. While poplar is generally free of prominent knots, it may display slight variations or mineral streaks, contributing to its natural charm. Its soft yet durable nature makes it an ideal choice that complements both rustic and contemporary styles.

# CABINET SPECIFICATIONS

## HIGH QUALITY CABINET FEATURES



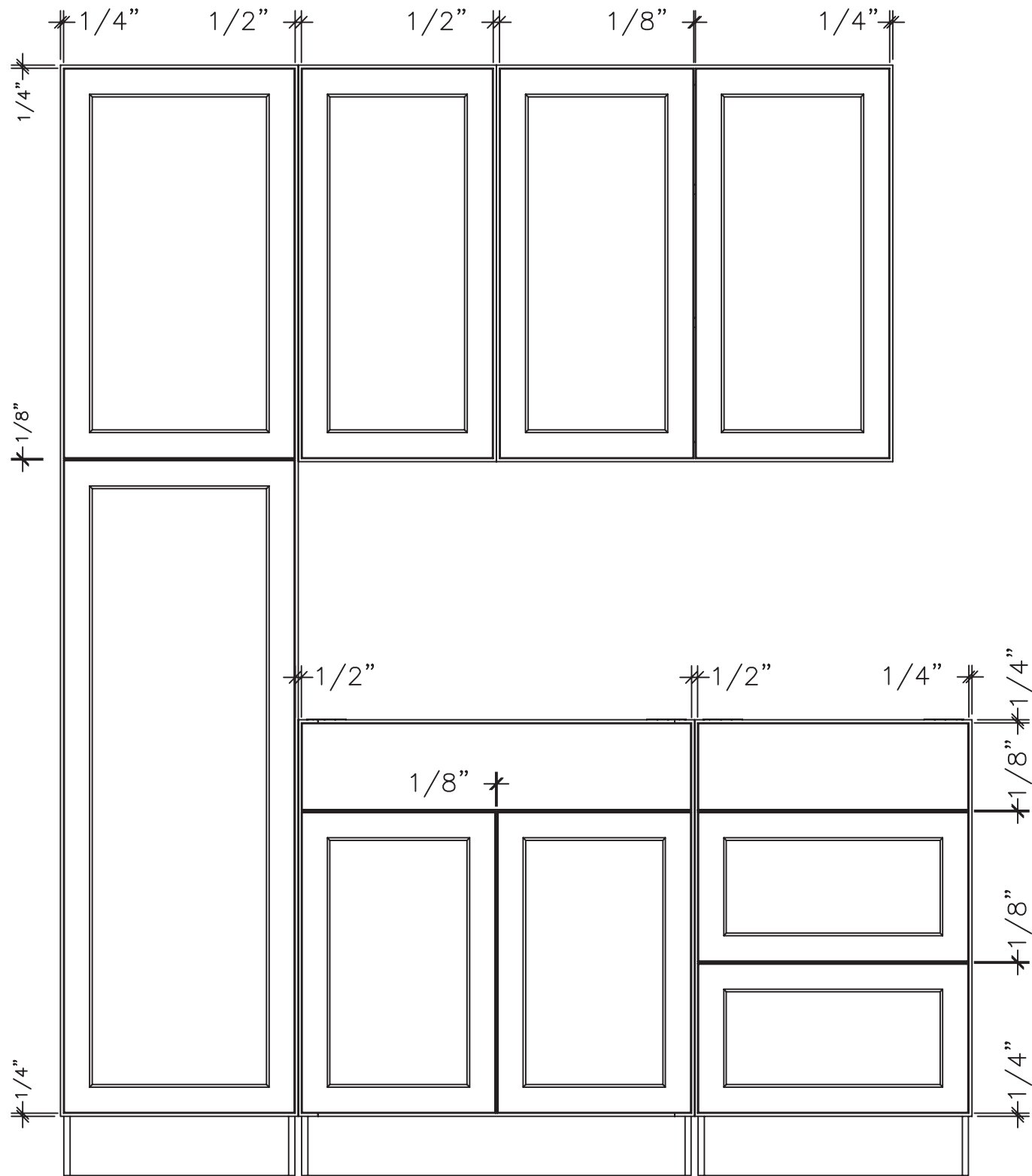
## SOLID WOOD DOVETAIL DRAWER BOX



### Dovetail drawer box

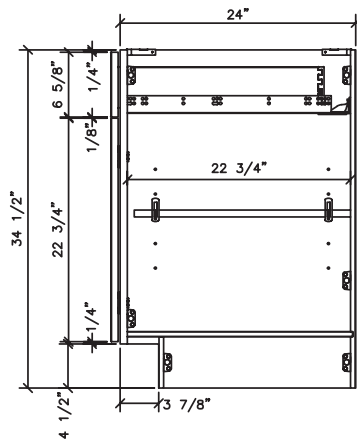
- 5/8" solid wood dovetail
- Clear-coated drawer box
- 1/4" veneered plywood fully captured bottom
- Full-extension undermount slides
- Soft-close
- 75 lb. weight capacity

# DOOR & DRAWER REVEAL DIMENSIONS

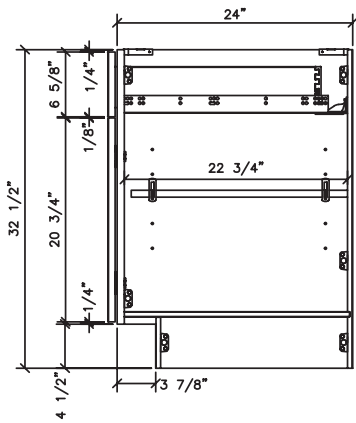


# CABINET DIMENSIONS

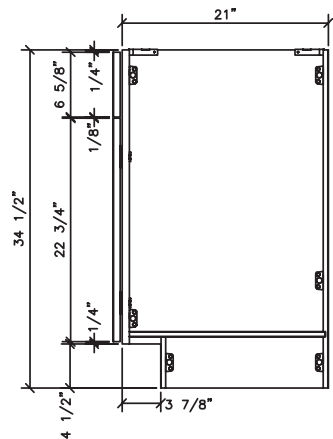
## BASE AND VANITY CABINET HEIGHTS AND DEPTHS



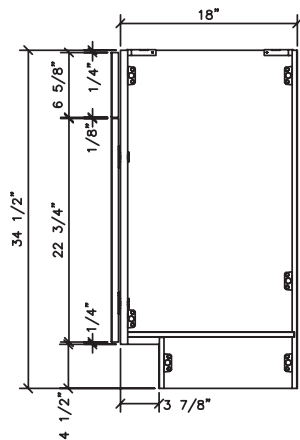
**B15  
BASE CABINET**



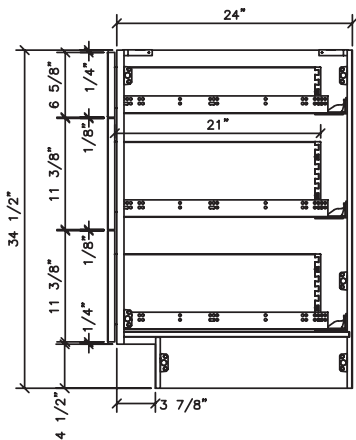
**B15 UD  
BASE UD CABINET**



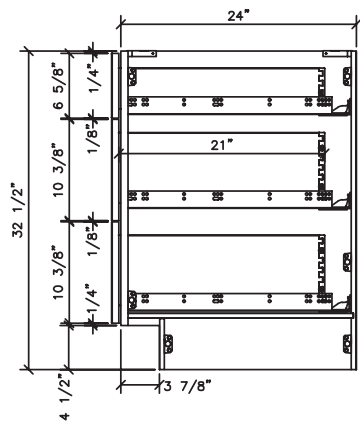
**VS24  
VANITY BASE CABINET**



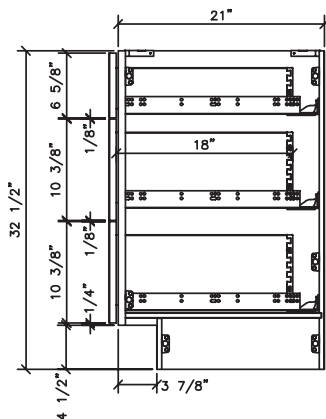
**VS2418  
VANITY BASE CABINET**



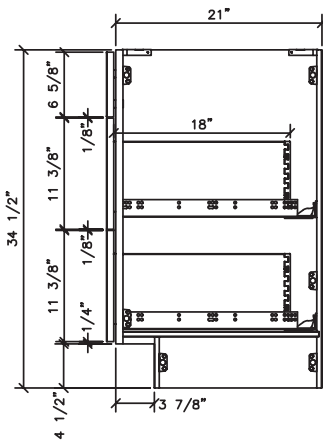
**DBI5  
BASE 3 DRAWER CABINET**



**DBI5UD  
BASE UD 3 DRAWER CABINET**



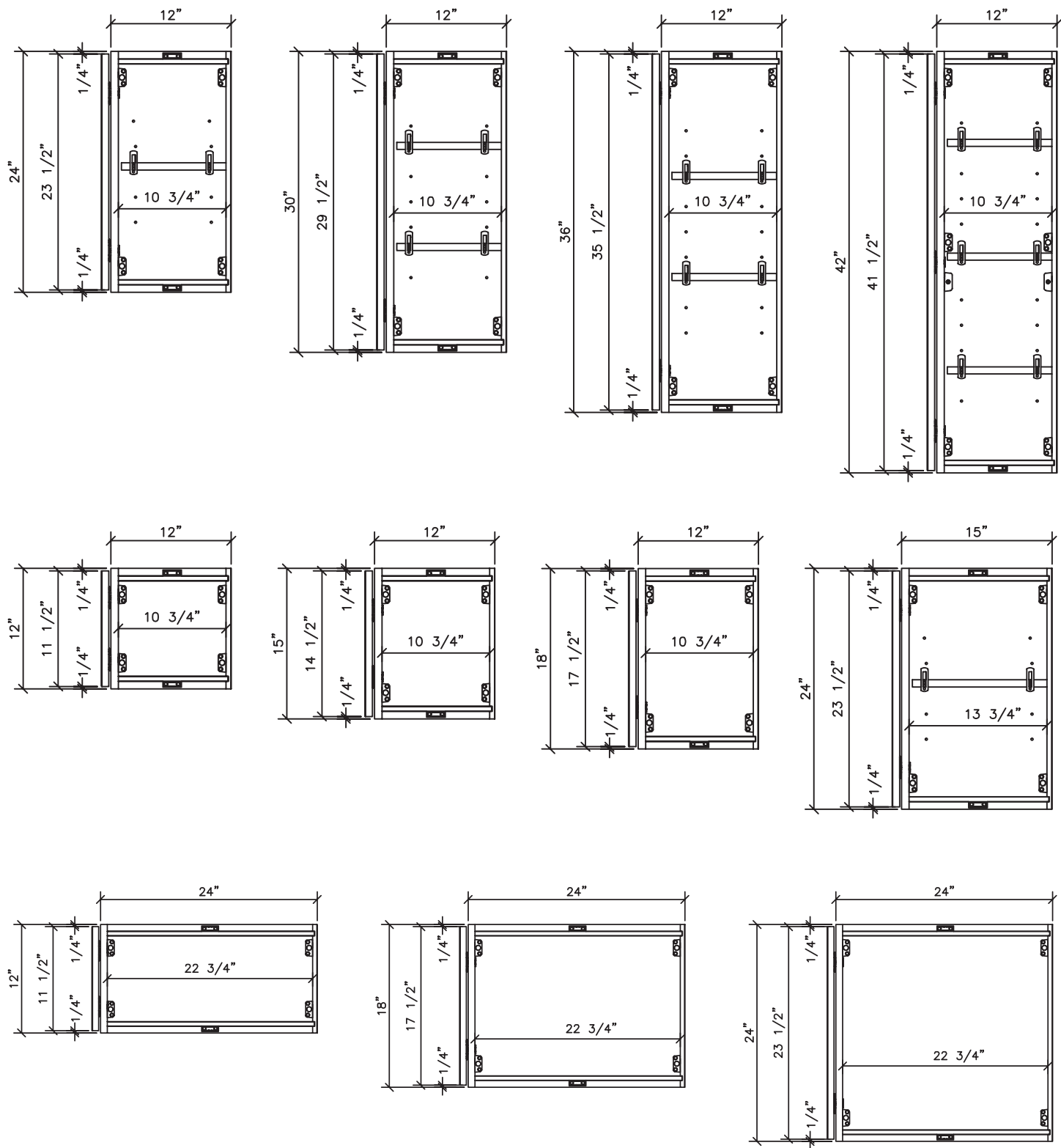
**VDBI5UD  
VANITY 3 DRAWER CABINET**



**VS2DR36  
VANITY 2 DRAWER CABINET**

# CABINET DIMENSIONS

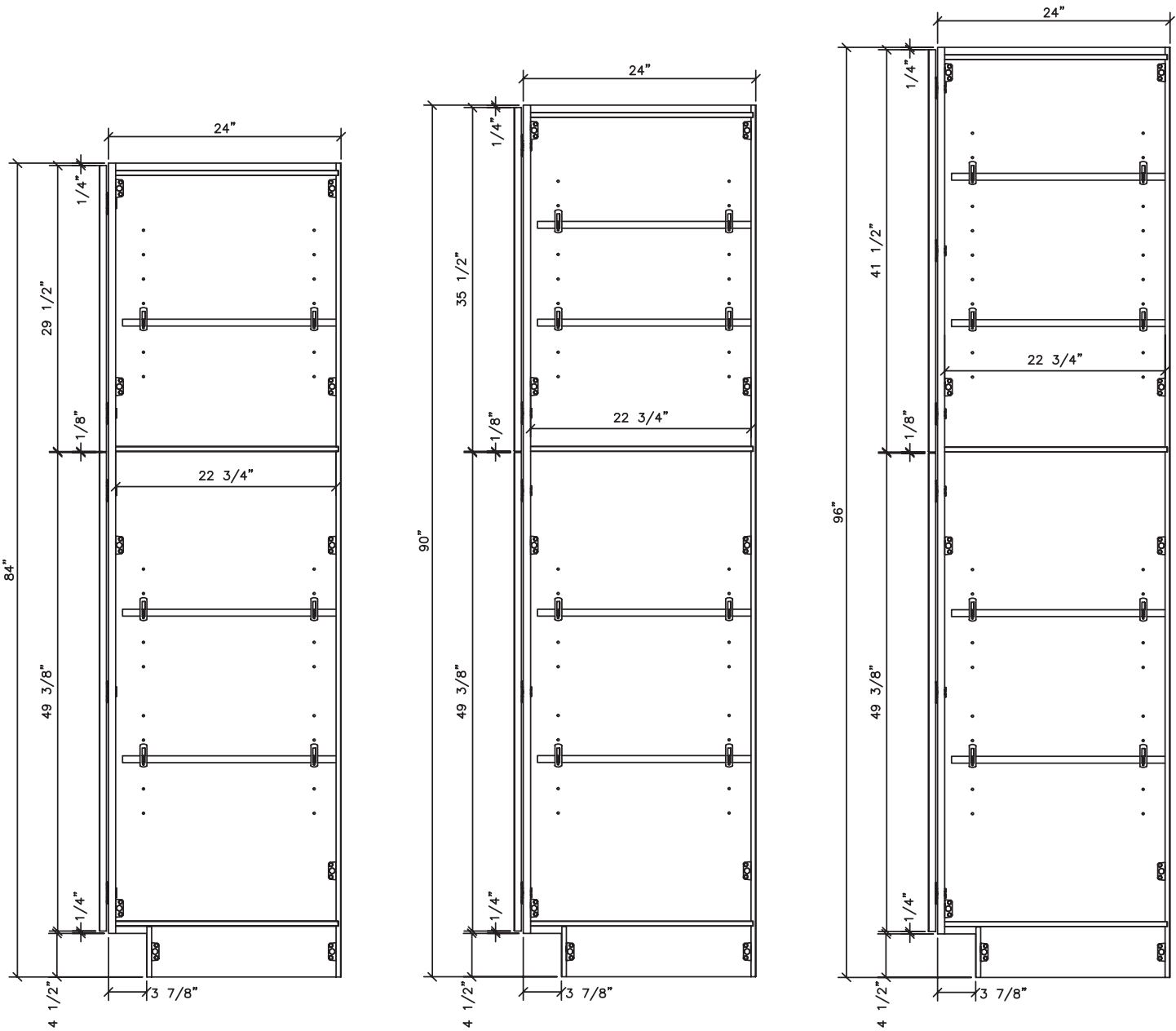
## WALL CABINET HEIGHTS AND DEPTHS





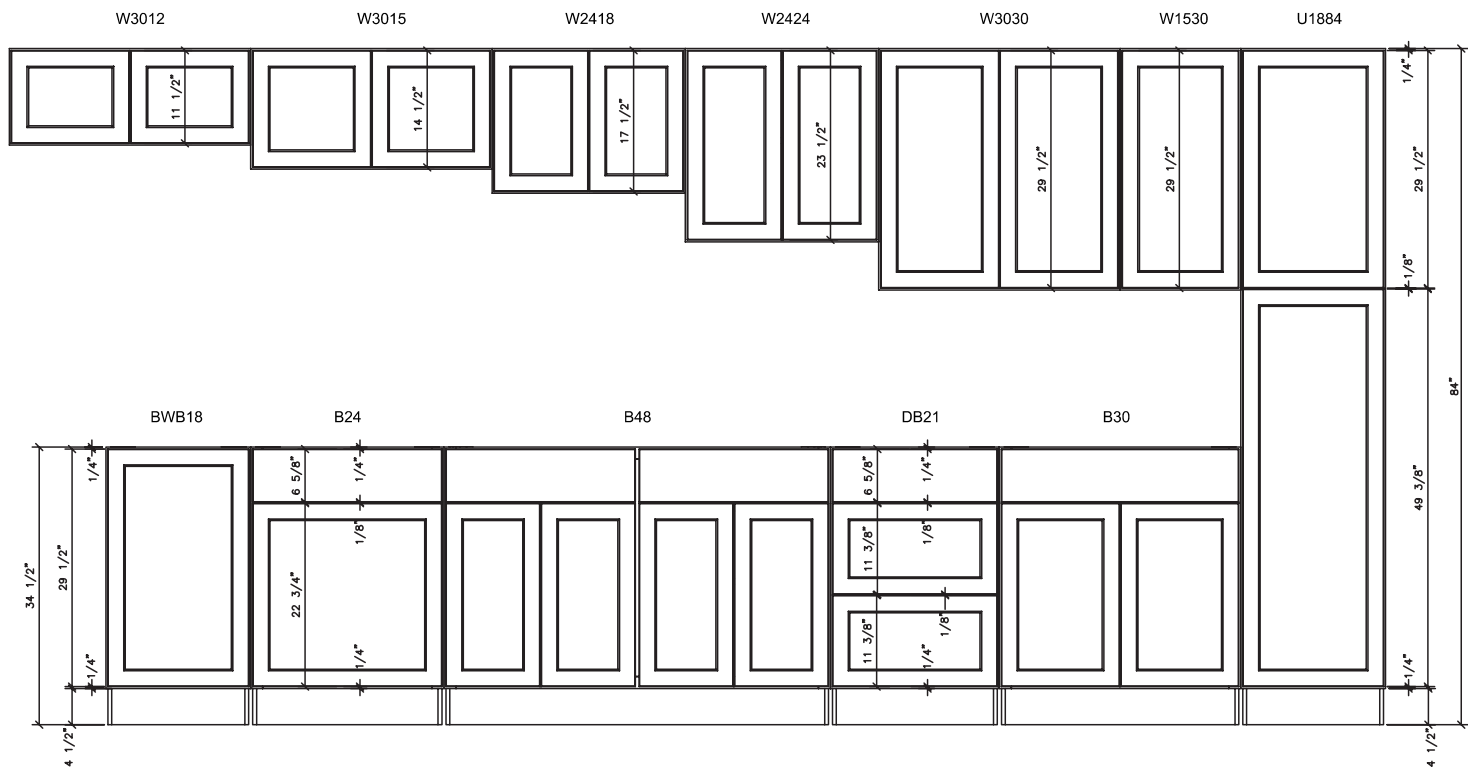
# CABINET DIMENSIONS

## TALL CABINET HEIGHTS AND DEPTHS

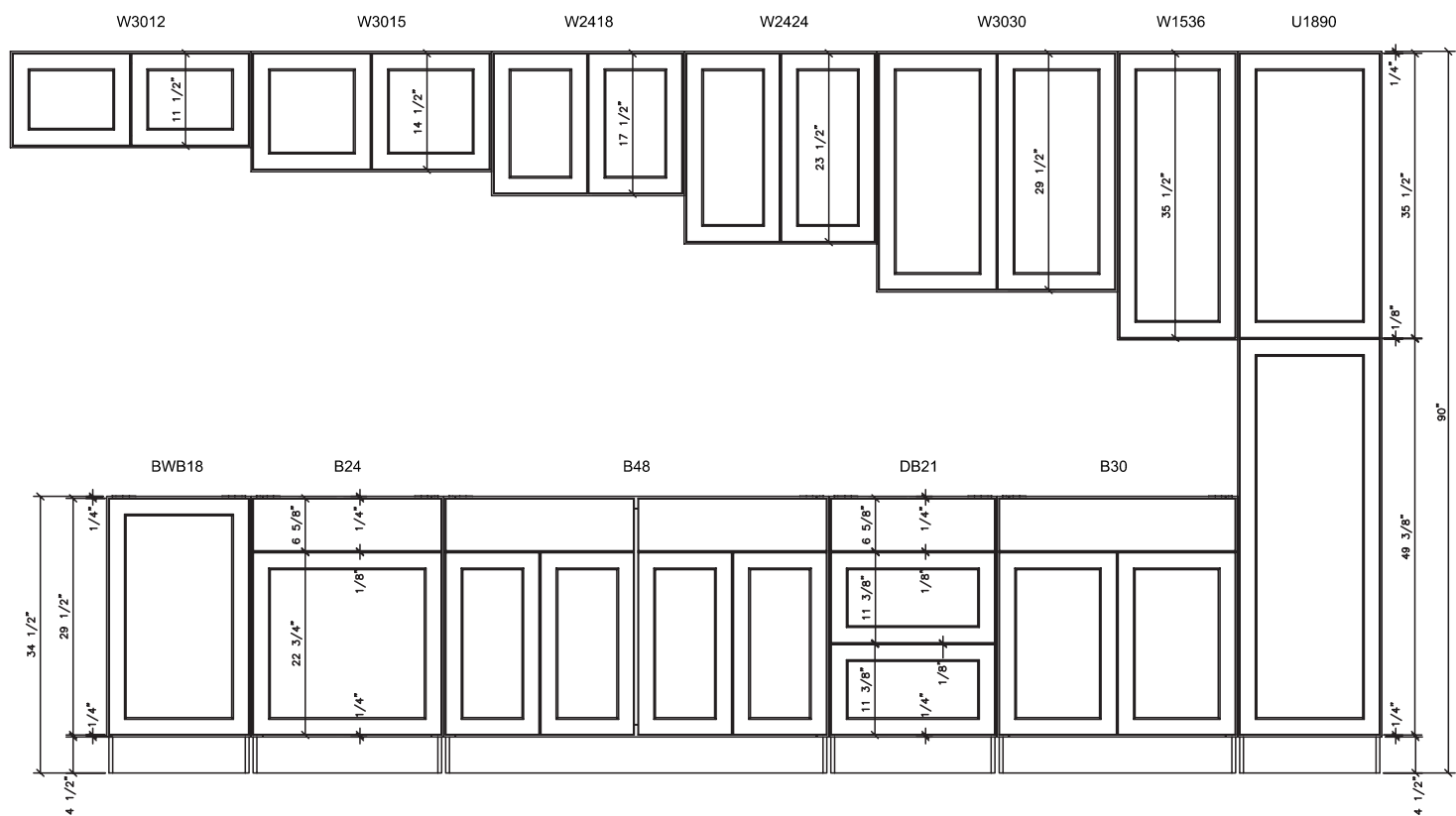


# CABINET DIMENSIONS

## 84" ASSEMBLED CABINETS

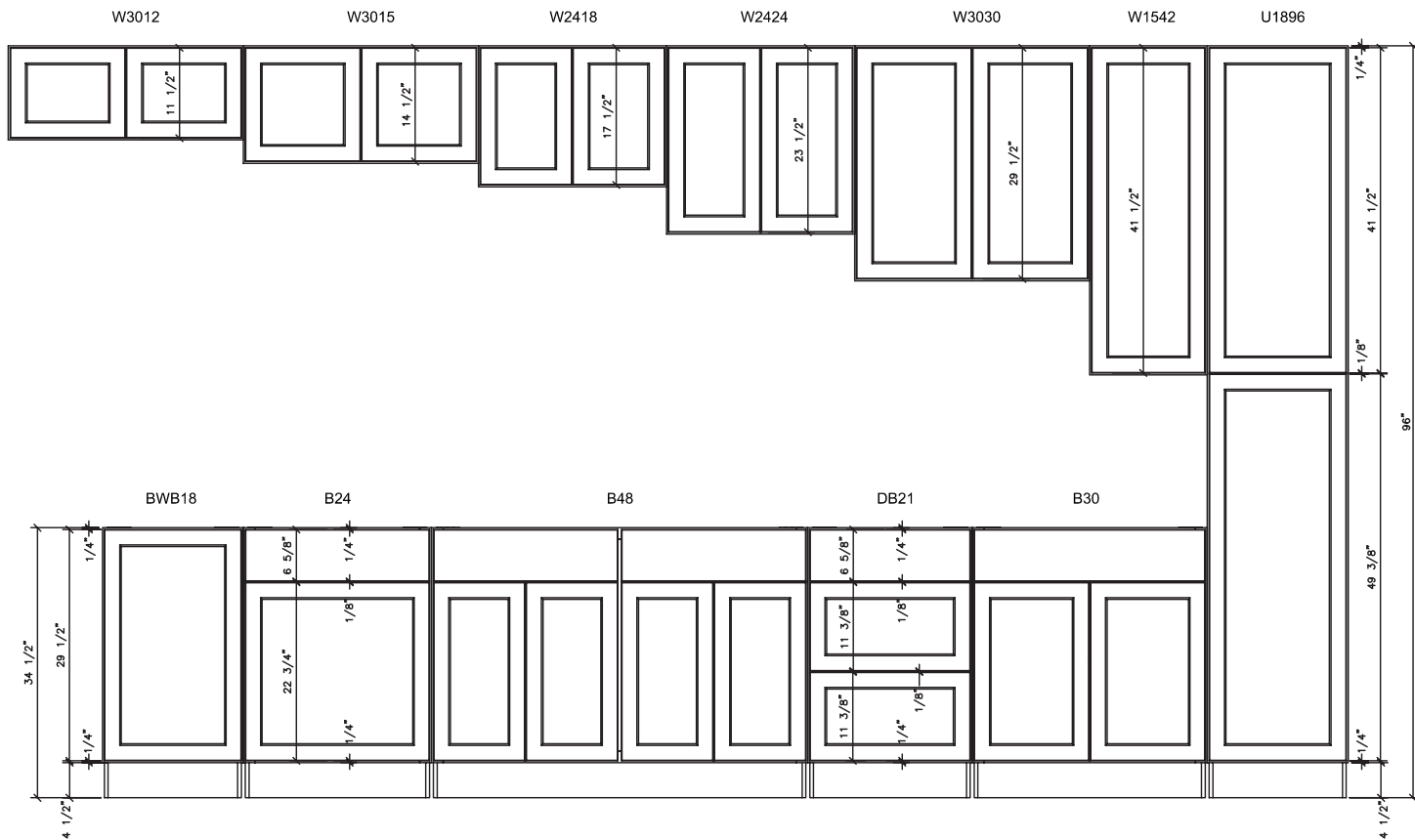


## 90" ASSEMBLED CABINETS

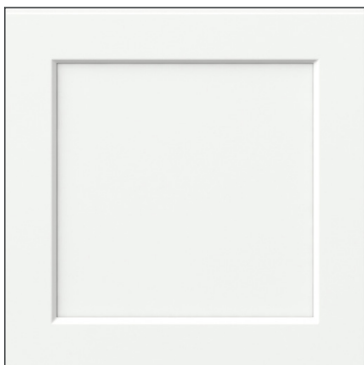


# CABINET DIMENSIONS

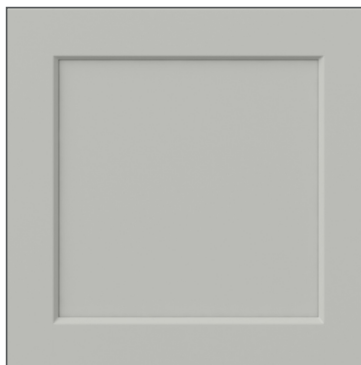
## 96" ASSEMBLED CABINETS



# DOOR STYLES & FINISHES



**BAXLEY**  
PURE WHITE (BW)



**BAXLEY**  
WHISPER GRAY (BG)



**BAXLEY**  
COCOA (BC)



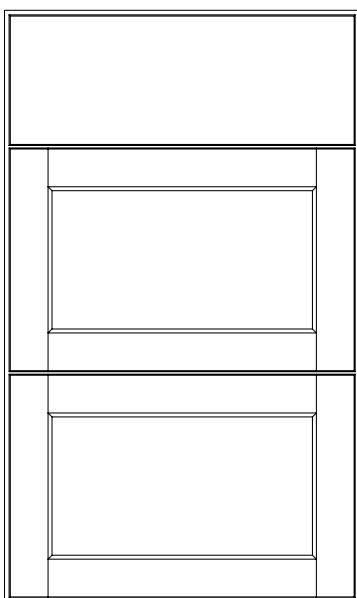
All part numbers end with a **two-letter code** representing the finish.

**Exceptions:**

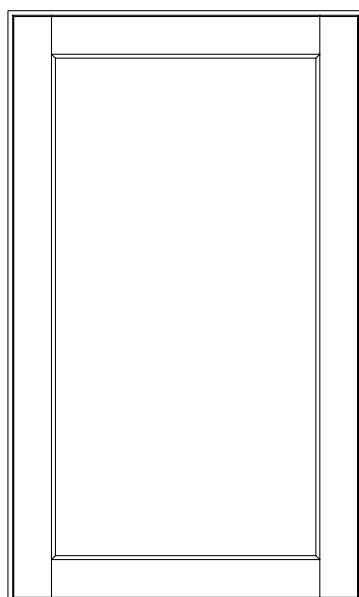
The following part numbers will have a **one-letter code** for the finish:

- BBC36ADA(L/R)
- BC36LSADA(L/R)

## 3 DRAWER BASE



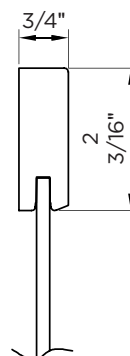
## WALL



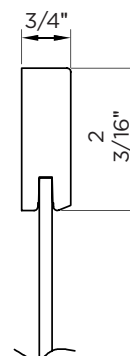
## DRAWER FRONT PROFILE



## DOOR PROFILE



SIDE



TOP/BOTTOM



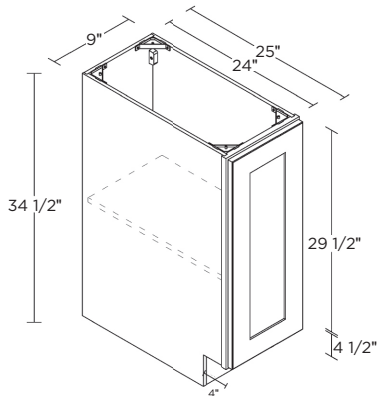
Glass door options are not available.

# BASE CABINETS

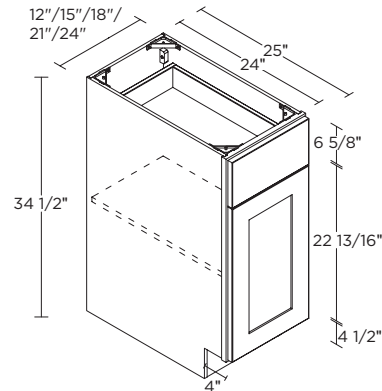
## FULL HEIGHT 1 DOOR

9"

B9FH(L/R)



## 1 DOOR / 1 DRAWER



12"	B12(L/R)
15"	B15(L/R)
18"	B18(L/R)
21"	B21(L/R)
24"	B24(L/R)

## 2 DOORS / 1 DRAWER

27"

B27

30"

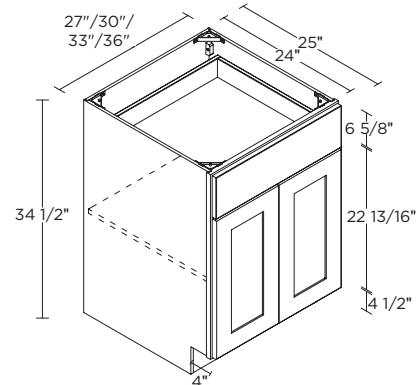
B30

33"

B33

36"

B36



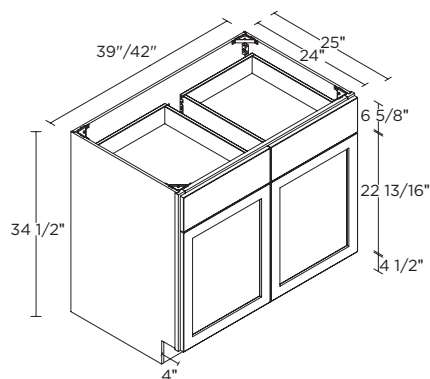
## 2 DOORS / 2 DRAWERS

39"

B39

42"

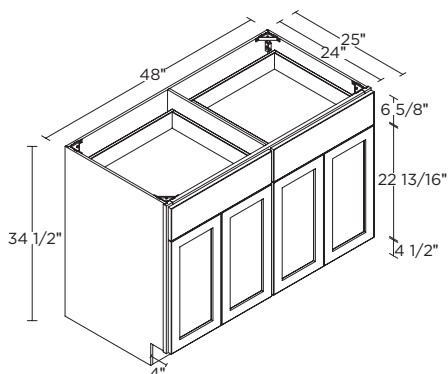
B42



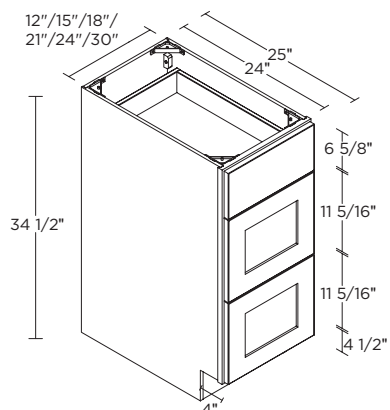
## 4 DOORS / 2 DRAWERS

48"

B48



## 3 DRAWERS

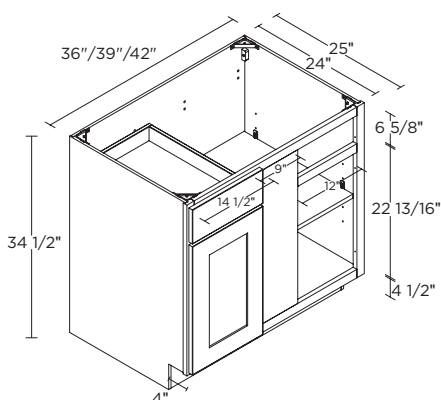


12"	DB12
15"	DB15
18"	DB18
21"	DB21
24"	DB24
30"	DB30

# BASE CABINETS

## CORNER BASE CABINETS

### 1 DOOR / 1 DRAWER

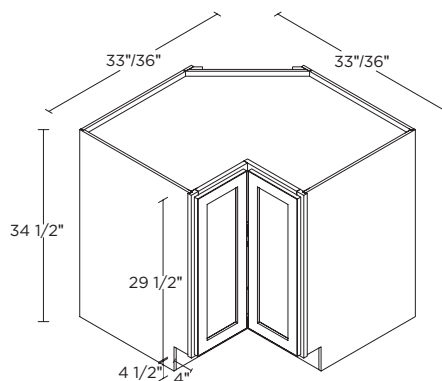


36"	BBC36(L/R)
39"	BBC39(L/R)
42"	BBC42(L/R)



"L" or "R" indicates blind.  
"R" (right) blind shown.

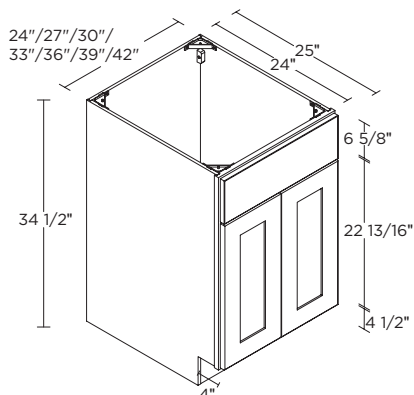
### BASE CORNER LAZY SUSAN



33"	BC33LS(L/R)
36"	BC36LS(L/R)
36"	BC36WS(L/R)

## SINK BASE CABINETS

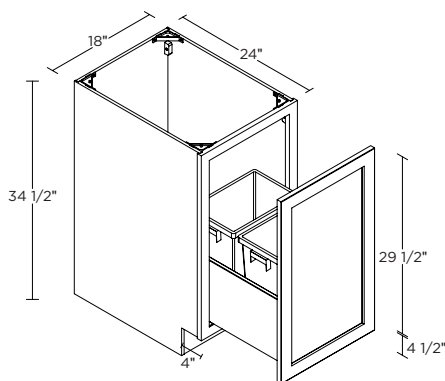
### 2 DOORS / 1 FALSE FRONT



24"	SB24FF
27"	SB27FF
30"	SB30FF
33"	SB33FF
36"	SB36FF
39"	SB39FF
42"	SB42FF

## WASTE/RECYCLING CABINETS

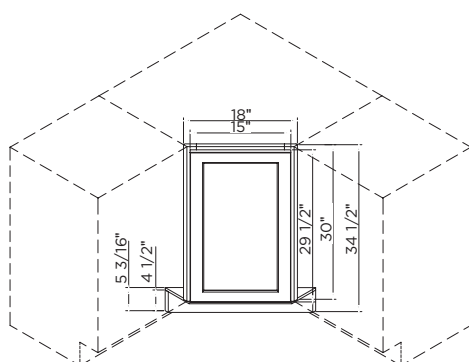
### PULLOUT CABINET WITH TWO WASTE BINS



18"	BWB18-2B
-----	----------

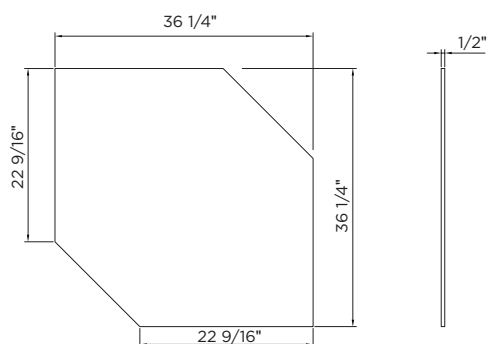
## BASE CORNER FRONT CABINETS

### ANGLED CABINET FRONT



This unit is a frame with a door and toe kick attached. It requires an adjacent cabinet (ordered separately) on the left side and on the right side. ACB3636 (ordered separately) is the cabinet bottom and is also required.

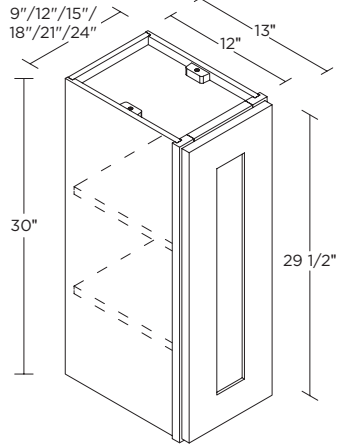
### ANGLED CABINET BASE



36"	ACB3636
-----	---------

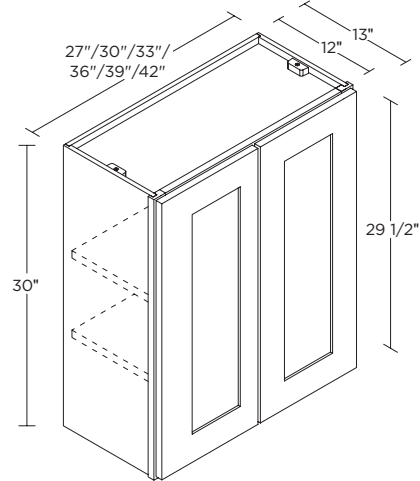
# WALL CABINETS

## 30" HIGH 1 DOOR



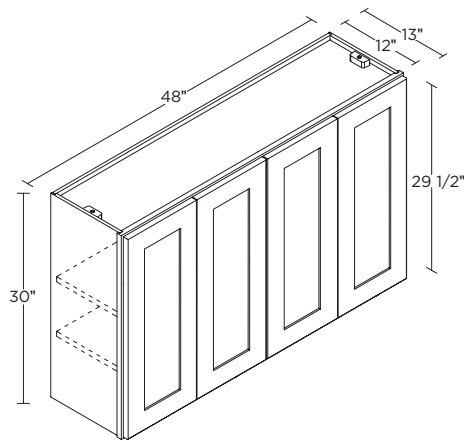
9"	W0930(L/R)
12"	W1230(L/R)
15"	W1530(L/R)
18"	W1830(L/R)
21"	W2130(L/R)
24"	W2430(L/R)

## 30" HIGH 2 DOORS



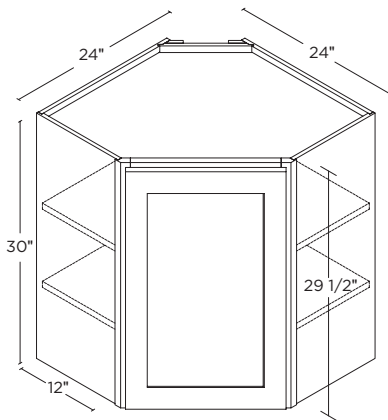
27"	W2730
30"	W3030
33"	W3330
36"	W3630
39"	W3930
42"	W4230

## 30" HIGH 4 DOORS



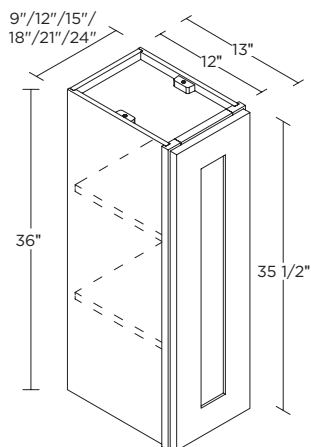
48"	W4830
-----	-------

## 30" WALL DIAGONAL CORNER



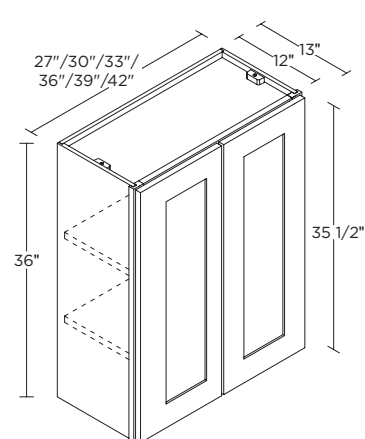
24"	DC2430(L/R)
-----	-------------

## 36" HIGH 1 DOOR



9"	W0936(L/R)
12"	W1236(L/R)
15"	W1536(L/R)
18"	W1836(L/R)
21"	W2136(L/R)
24"	W2436(L/R)

## 36" HIGH 2 DOORS



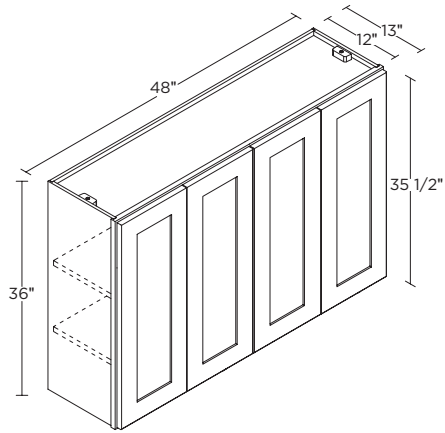
27"	W2736
30"	W3036
33"	W3336
36"	W3636
39"	W3936
42"	W4236

# WALL CABINETS

**36" HIGH 4 DOORS**

48"

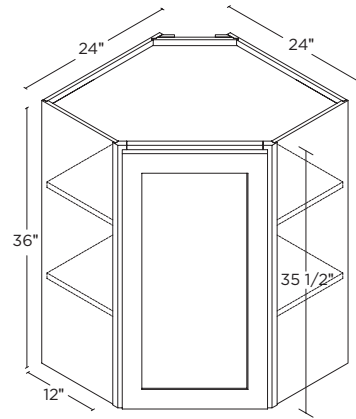
W4836



**36" WALL DIAGONAL CORNER**

24"

DC2436(L/R)



**42" HIGH 1 DOOR**

12"

W1242(L/R)

15"

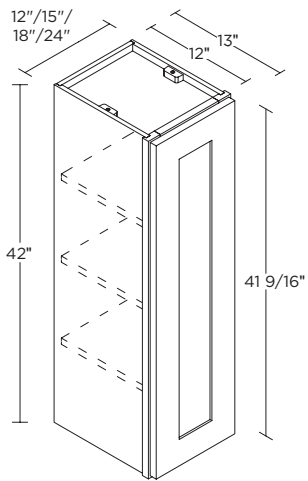
W1542(L/R)

18"

W1842(L/R)

24"

W2442(L/R)



**42" HIGH 2 DOORS**

30"

W3042

33"

W3342

36"

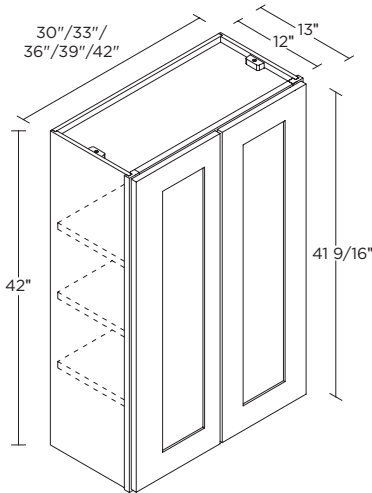
W3642

39"

W3942

42"

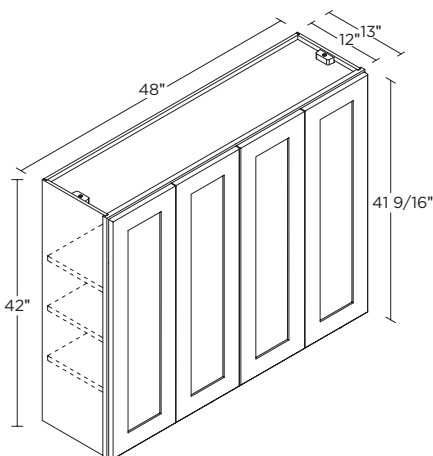
W4242



**42" HIGH 4 DOORS**

48"

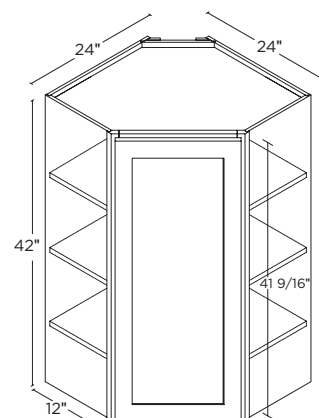
W4842



**42" WALL DIAGONAL CORNER**

24"

DC2442(L/R)



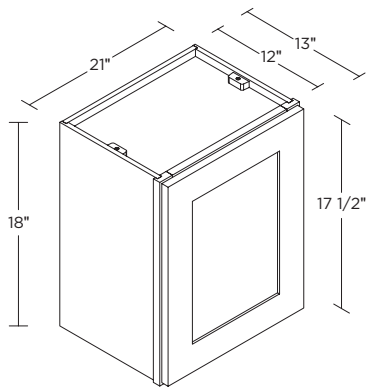


# WALL CABINETS

## WALL BRIDGE CABINETS

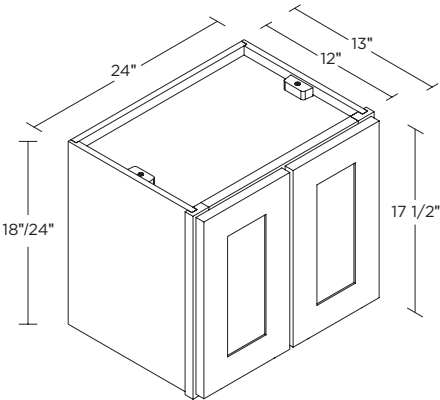
1 DOOR

21"	W2118(L/R)
-----	------------



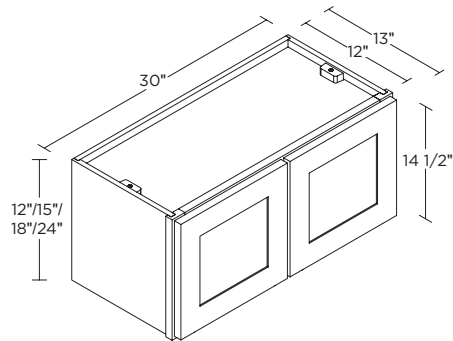
2 DOORS

24"	W2418
24"	W2424



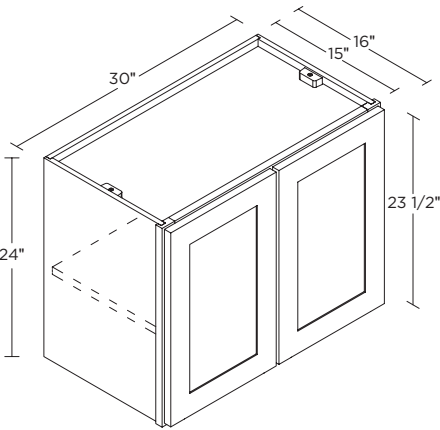
2 DOORS

30"	W3012
30"	W3015
30"	W3018
30"	W3024



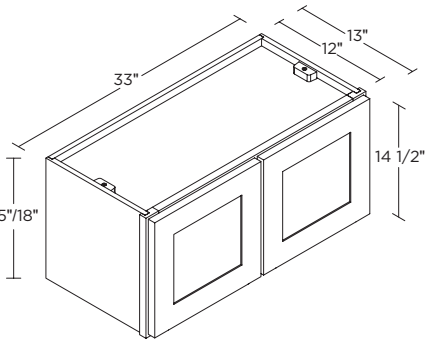
2 DOORS

30"	W302415
-----	---------



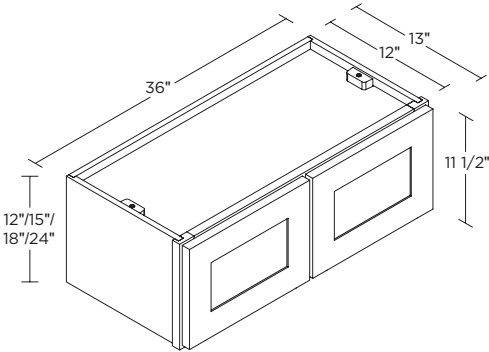
2 DOORS

33"	W3315
33"	W3318



2 DOORS

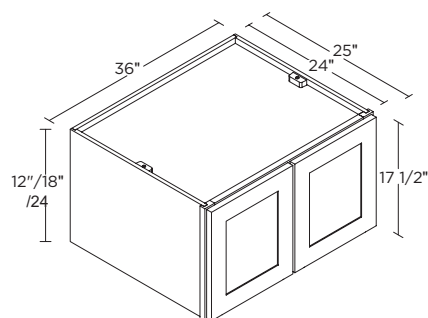
36"	W3612
36"	W3615
36"	W3618
36"	W3624



# WALL CABINETS

## WALL BRIDGE CABINETS

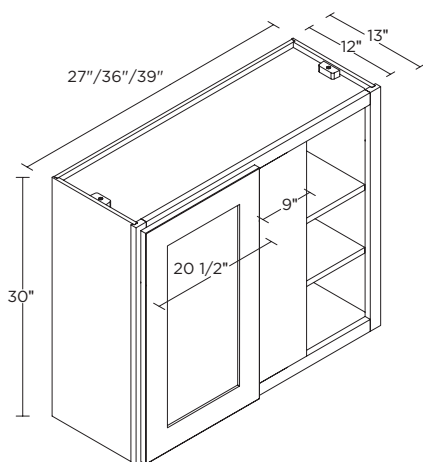
### 2 DOORS



36"	W361224
36"	W361824
36"	W362424

## BLIND CORNER WALL CABINETS

### 30" HIGH 1 DOOR

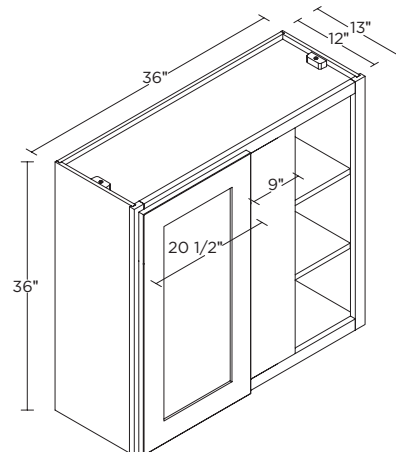


27"	WBC2730(L/R)
36"	WBC3630(L/R)
39"	WBC3930(L/R)



"L" or "R" indicates blind.  
"R" (right) blind shown.

### 36" HIGH 1 DOOR

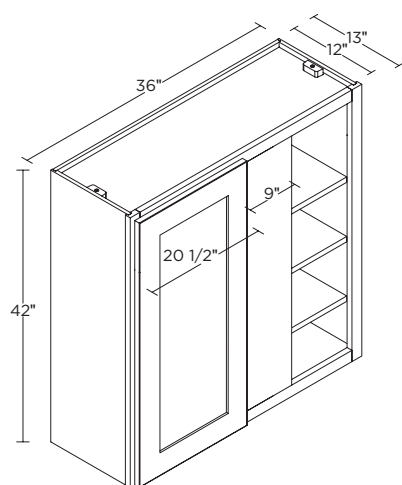


36"	WBC3636(L/R)
-----	--------------



"L" or "R" indicates blind.  
"R" (right) blind shown.

### 42" HIGH 1 DOOR



36"	WBC3642(L/R)
-----	--------------

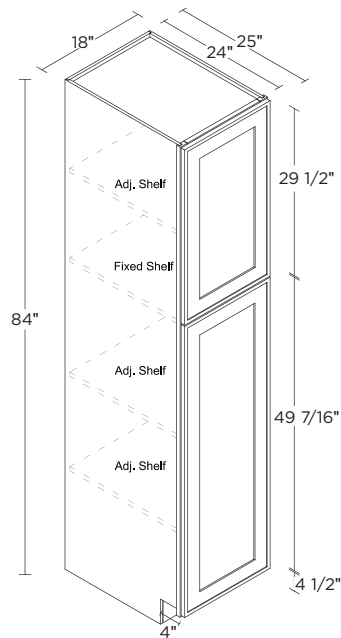


"L" or "R" indicates blind.  
"R" (right) blind shown.

# TALL CABINETS

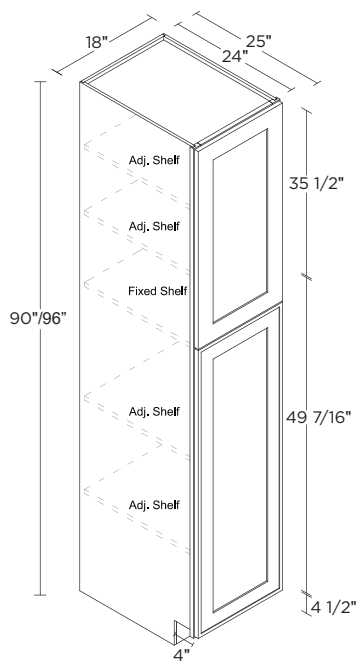
UTILITY CABINET WITH 2 DOORS, 1 FIXED SHELF AND 3 ADJUSTABLE SHELVES

84"	U1884(L/R)
-----	------------



UTILITY CABINET WITH 2 DOORS, 1 FIXED SHELF AND 4 ADJUSTABLE SHELVES

90"	U1890(L/R)
96"	U1896(L/R)

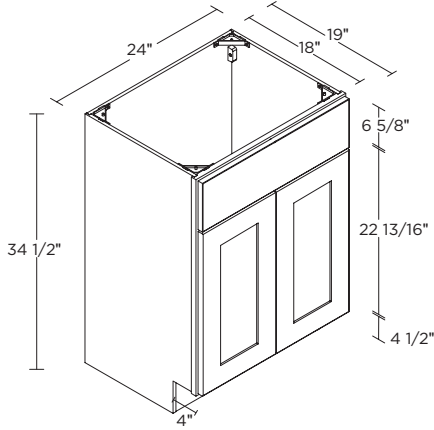


# VANITIES

**VANITY SINK BASE 2 DOORS /  
1 FALSE FRONT**

24"

VSB2418



**VANITY SINK BASE 2 DOORS /  
1 FALSE FRONT**

24"

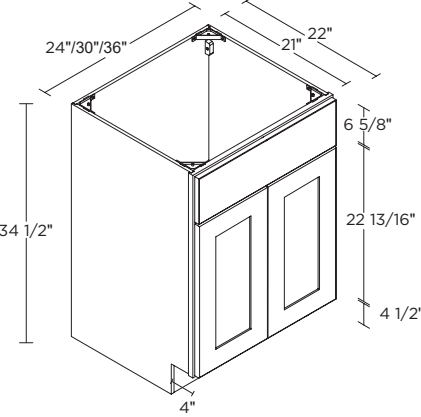
VSB24

30"

VSB30

36"

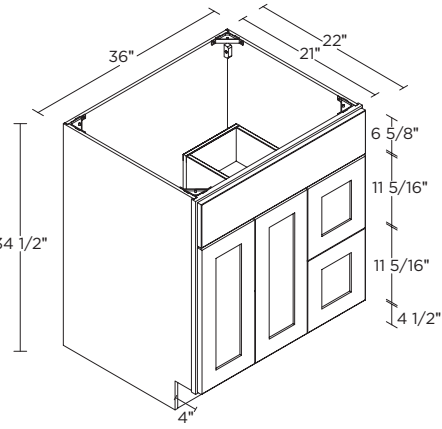
VSB36



**VANITY SINK BASE 2 DOORS /  
2 DRAWERS / 1 FALSE FRONT**

36W

VS2DR36



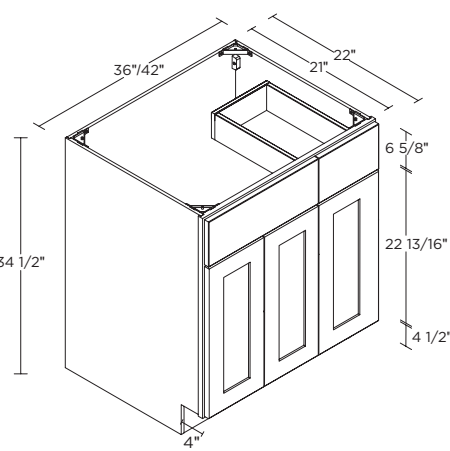
**VANITY SINK BASE 3 DOORS /  
1 DRAWER / 1 FALSE FRONT**

36"

VS1DR36

42"

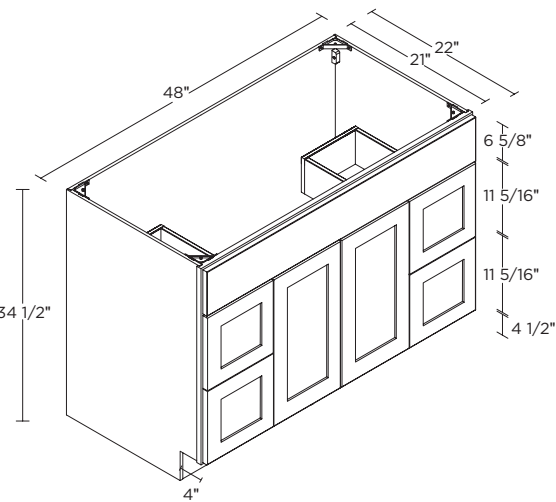
VS1DR42



**VANITY SINK BASE 2 DOORS /  
4 DRAWERS / 1 FALSE FRONT**

48"

VSB2DLR48



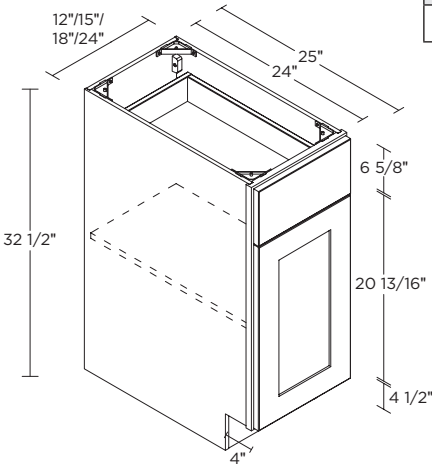
# ADA KITCHEN CABINETS



We recommend working with a licensed and experienced contractor to ensure your installation complies with all applicable local, state, and federal ADA requirements.

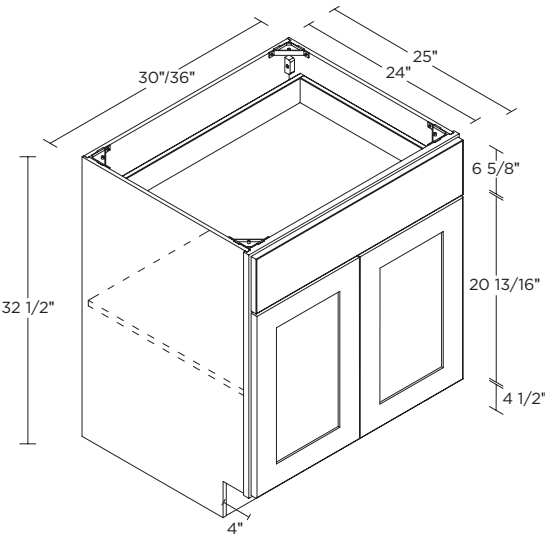
## BASE 1 DOOR / 1 DRAWER

12"	B12ADA(L/R)
15"	B15ADA(L/R)
18"	B18ADA(L/R)
24"	B24ADA(L/R)



## BASE 2 DOORS / 1 DRAWER

30"	B30ADA
36"	B36ADA

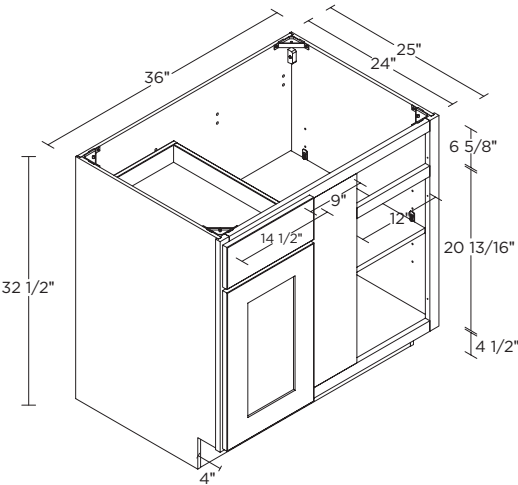


## BASE BLIND CORNER 1 DOOR / 1 DRAWER

36"	BBC36ADA(L/R)
-----	---------------

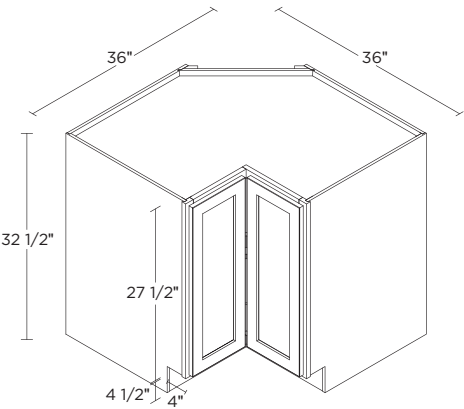


"L" or "R" indicates blind.  
"R" (right) blind shown.



## BASE CORNING CABINET WITH DURABLE POLYMER LAZY SUSAN

36"	BC36LSADA(L/R)
-----	----------------

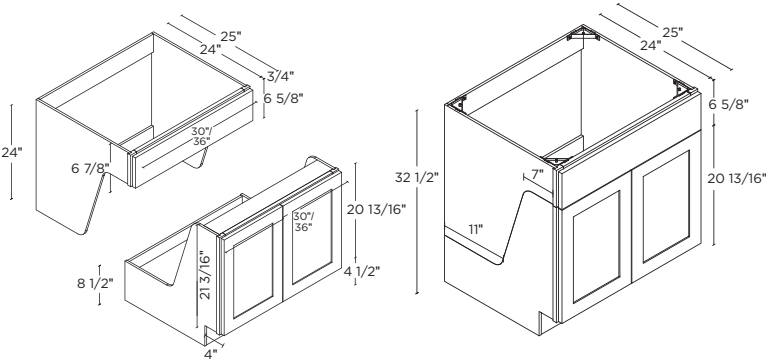
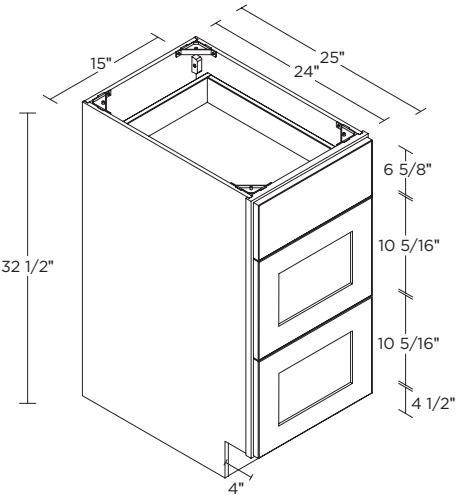


# ADA KITCHEN CABINETS

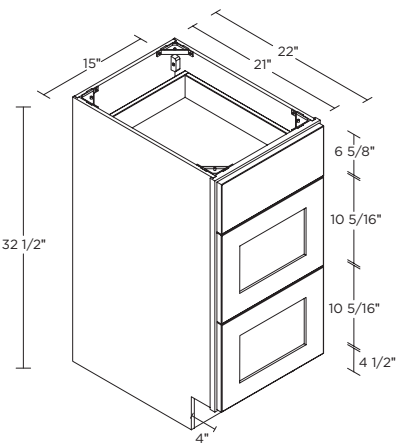
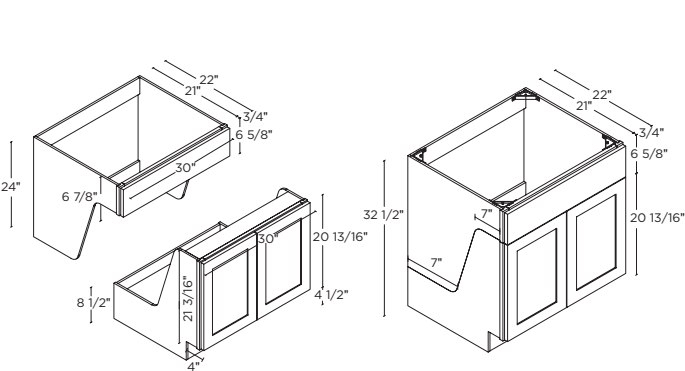


We recommend working with a licensed and experienced contractor to ensure your installation complies with all applicable local, state, and federal ADA requirements.

BASE 3 DRAWERS	15"	DB15ADA	SINK BASE 2 DOORS / 1 REMOVABLE FRONT	30"	SB30RFADA
				36"	SB36RFADA

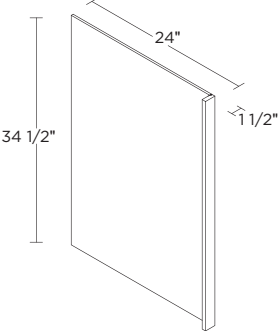
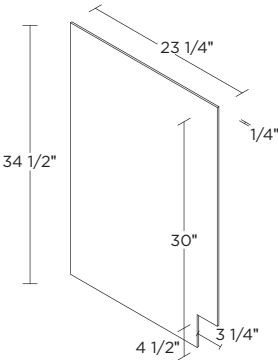


VANITY SINK BASE 2 DOORS / 1 REMOVABLE FRONT	30"	VSB30RFADA	VANITY 3 DRAWERS	15"	V3D15ADA

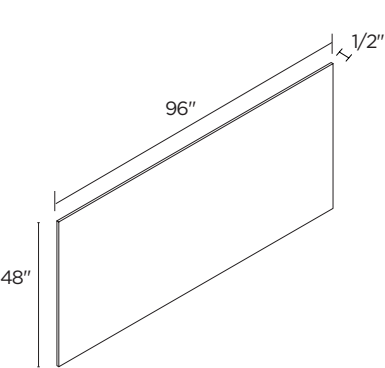


# FILLERS, PANELS & ACCESSORIES

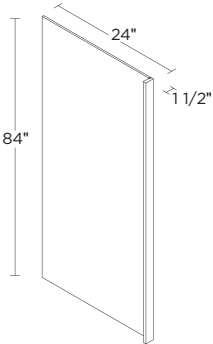
BASE END PANEL	24"	BEP2435	DISHWASHER PANEL	24"	DEP335
----------------	-----	---------	------------------	-----	--------



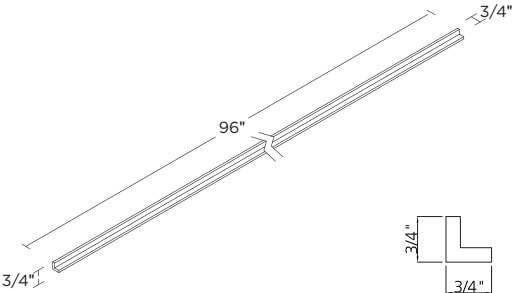
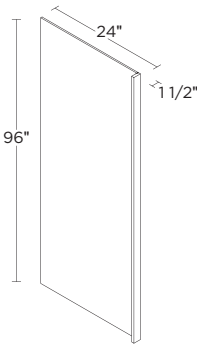
ISLAND PANEL	48"	IFEP4896	REFRIGERATOR END PANEL	24"	REP2484
--------------	-----	----------	------------------------	-----	---------



For the Cocoa finish, the wood grain runs from a left to right direction.



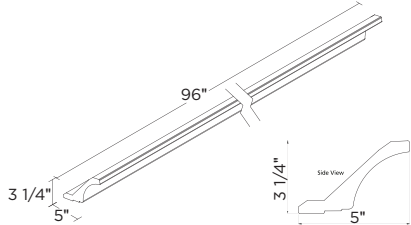
REFRIGERATOR END PANEL	24"	REP2496	OUTSIDE CORNER MOLDING	96"	OCM96
------------------------	-----	---------	------------------------	-----	-------



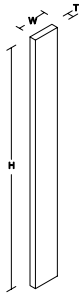
# FILLERS, PANELS & ACCESSORIES

## COVE CROWN MOLDING WITH CLEAT

96"	CCMP96C
-----	---------



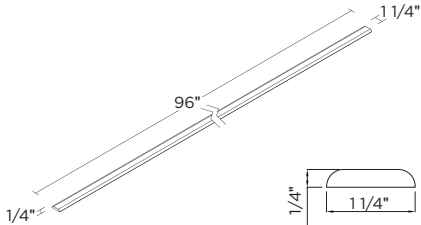
## FILLERS



30"	F330
36"	F336
42"	F342
96"	F396
30"	F630
36"	F636
42"	F642
96"	F696

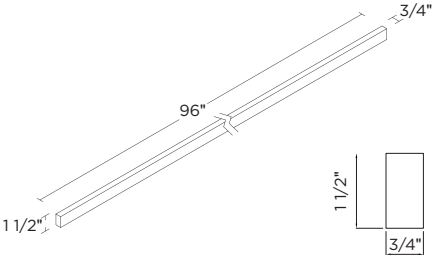
## SCRIBE MOLDING

96"	SCM96
-----	-------



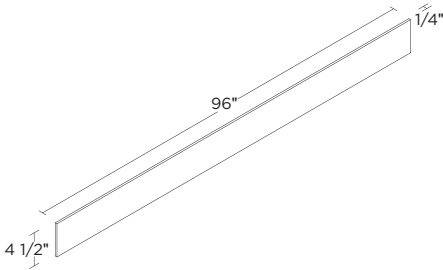
## SQUARE EDGE MOLDING

96"	SEM96
-----	-------



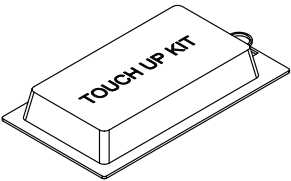
## TOE KICK

96"	TOEKICK8
-----	----------



## TOUCH-UP KIT

4pc	TUK
-----	-----



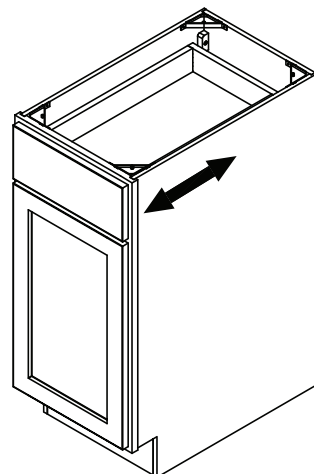
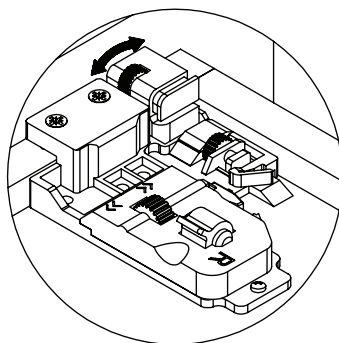
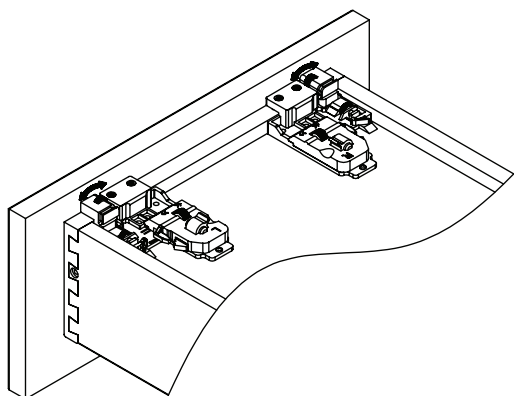


# CABINET ADJUSTMENTS

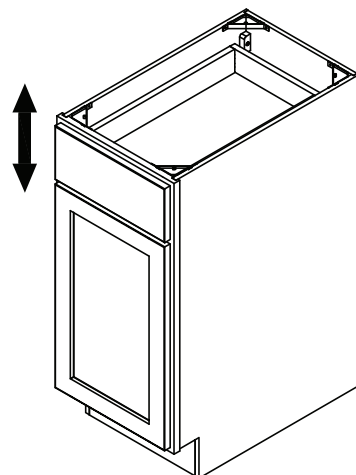
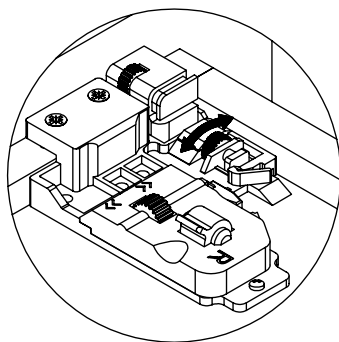
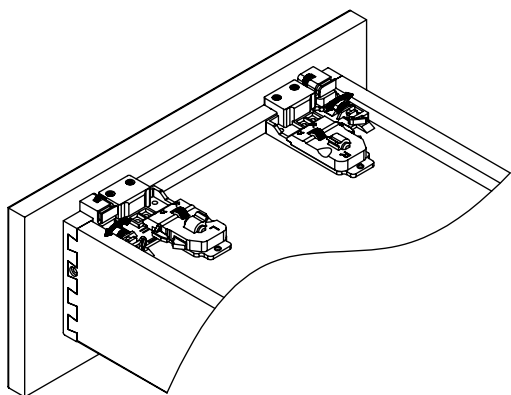
## DRAWER FRONT ADJUSTMENT

If you need to adjust your drawer front/back, up/down or left/right, please follow the below instructions.

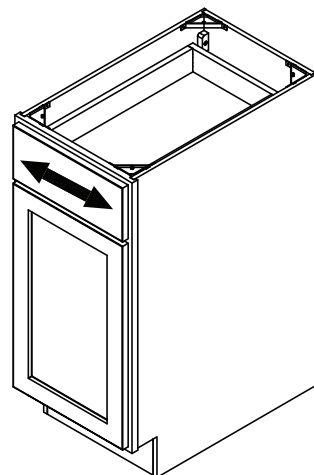
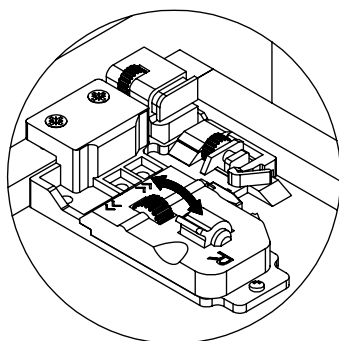
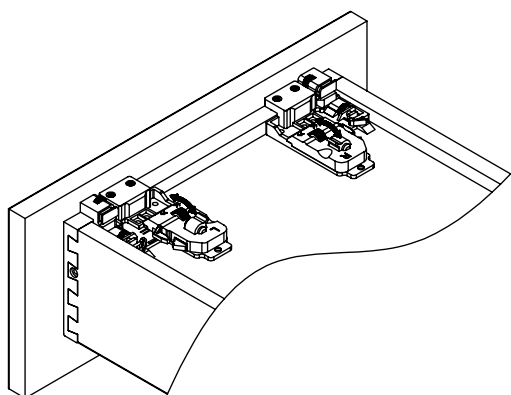
### Front/Back Adjustment



### Up/Down Adjustment



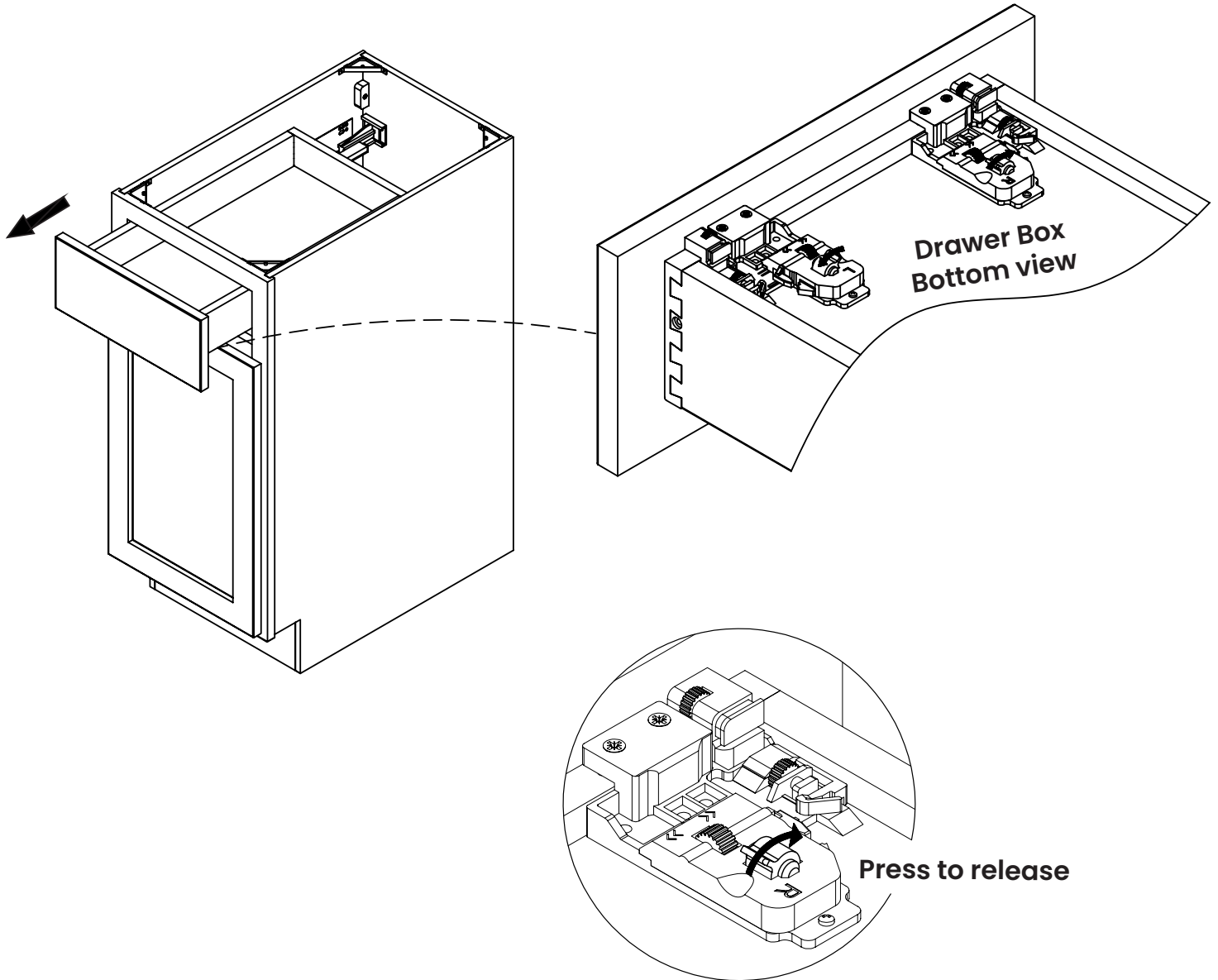
### Left/Right Adjustment



# CABINET ADJUSTMENTS

## DRAWER BOX RELEASE

If you need to release your drawer box from the cabinet , please follow the below instructions.

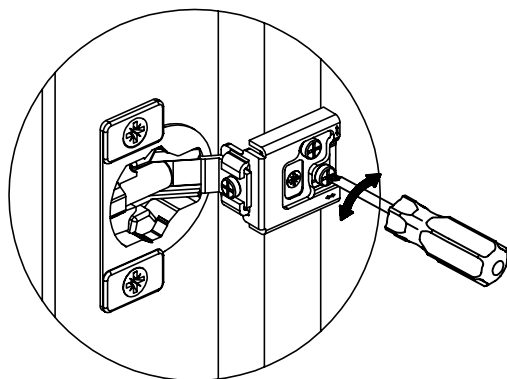


**Press the handle and release the drawer box**

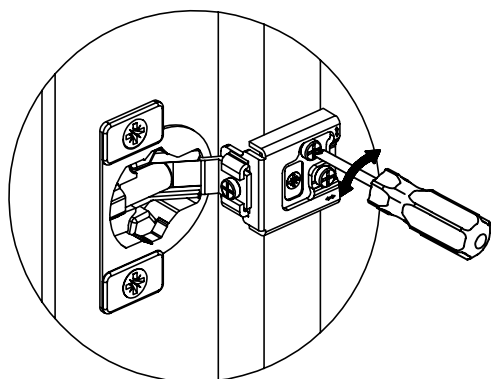
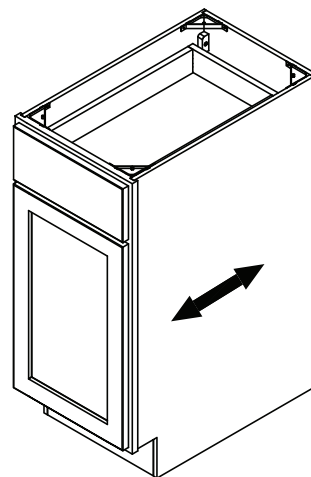
# CABINET ADJUSTMENTS

## DOOR ADJUSTMENT

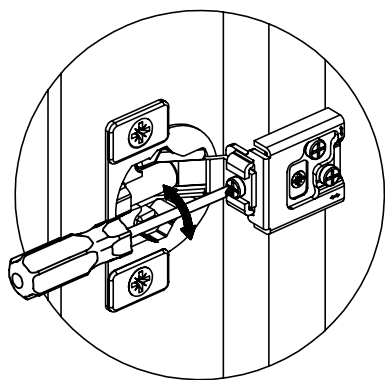
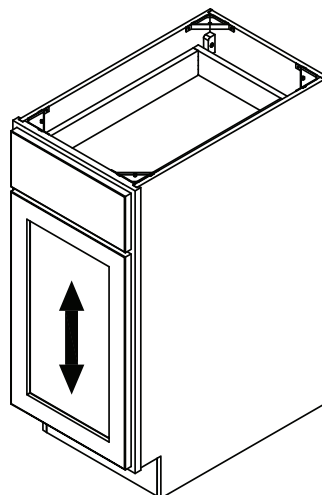
If you need to adjust your door front/back, up/down or left/right, please follow the below instructions.



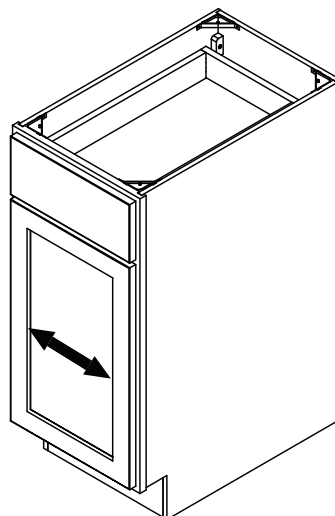
**Front/Back  
Adjustment**



**Up/Down  
Adjustment**



**Left/Right  
Adjustment**



# QUALITY & CARE GUIDE

## QUALITY AND CARE GUIDE

Studio Design cabinetry is hand-crafted from the finest materials. Our fine finishes are very durable and moisture resistant, but they are not moisture-proof. Care must be taken to ensure durability for a lifetime. Use the following guidelines to assist you in maintaining the beauty of your new cabinetry.

When the installation is complete, vacuum and wipe down all interiors and exteriors with a soft dampened cloth to remove all dust. Pay special attention to the drawer glides – dust and wood particles should be removed to ensure your glides slide smoothly.

The high-quality finish of your cabinetry is designed to withstand daily use. All surfaces may be cleaned with a soft dampened cloth and warm water. For a difficult situation, use a soft dampened cloth with mild dish soap (not detergent). After cleaning, dry immediately with another soft dry cloth. Do not use harsh chemicals or ammonia-based products as they may cause discoloration of the finish.

It is important to wipe up spills from your cabinetry as they occur. Give special attention to the product around the sink and dishwasher. Avoid draping damp or wet dish towels over the doors of the sink base cabinet.

Prolonged exposure to spills, including food, oil, grease, water, coffee, tea, food colorings, and/or other liquids may cause permanent discoloration or damage to the finish. Studio Design's Lifetime Limited Warranty does not apply in cases where the product has been exposed to the above elements, thus resulting in damage to the product.

## DO'S AND DON'TS

### CLEANING PRODUCTS TO AVOID

The following cleaning products are to be avoided as damage may occur:

- Harsh detergents, strong soaps, abrasive cleaning products such as tub and sink cleansers, scouring powder, scouring pads, steel wool or self-polishing waxes.
- Sponges or dishcloths. They may contain particles that could scratch your cabinets, or they may contain food and oil residue or remnants of harsh cleaning solutions.
- Solvent-based or petroleum-based products such as mineral spirits, nail-polish removers or paint thinners.
- Ammonia or cleaning products that include ammonia.
- Bleach or cleaning products that include bleach.
- Silicone-based cleaning, waxing, or polishing products.

### WAXING AND POLISHING

Waxing is not required or recommended. Over time, waxing and polishing compounds may build up on the surface of your cabinets and cause a hazy, streaky or yellowed appearance. This wax build-up is very difficult to remove.

# QUALITY & CARE GUIDE

## **AVOID HEAT DAMAGE**

The heat generated when using an oven's self-cleaning feature is much greater than during normal cooking. If this heat escapes from the oven, it can damage your cabinets. While this is a rare circumstance, you can minimize the risk of cabinet damage by removing cabinet doors and drawers nearest the oven before using its self-cleaning feature.

## **AVOID LIGHT DAMAGE**

Exposure to direct sunlight tends to darken the color of natural wood products. Sunlight can also fade painted MDF and laminated surfaces. You should consider draperies or blinds to shield your cabinets from direct sunlight.

# WARRANTY

## **Limited Lifetime Warranty**

All products must be inspected immediately upon receipt for any physical damage, missing boxes or components. Any visible damage to the goods or missing packages must be noted to the carrier and marked on the bill of lading. These claims must be submitted within 14 days of receipt.

## **What This Warranty Covers:**

The manufacturer warrants its products to be free from substantial defects in materials and workmanship from the original date of purchase under normal home use. This warranty is offered only to the original consumer purchaser and may not be transferred. The manufacturer is only responsible for the actual purchase price.

## **How Long the Warranty Lasts:**

Coverage for all wall cabinets, base cabinets, pantry cabinets, door fronts, drawer fronts, shelves, cover panels, fillers, moldings, hinges, drawer parts (rails and soft-close mechanisms), adjustable feet and storage accessories are warranted to the original purchaser for as long as they own their home. This warranty is not transferable.

## **What the manufacturer will do under the warranty:**

During the warranty period, The manufacturer at its discretion, will repair or replace any part or product that proves to have substantial defects in materials or workmanship, or the manufacturer will provide an equivalent replacement product. The manufacturer reserves the right to change specifications in design and materials without notice and with no obligation to replace products that were previously manufactured.

## **Implied Warranties:**

The manufacturer disclaims any implied warranty of merchantability, and there are no warranties that extend beyond the descriptions on the face hereof. If any implied warranty arises under applicable law, then any and all implied warranties are limited in duration to the duration of this written warranty to the extent allowed by applicable law. Some jurisdictions do not allow exclusions or limitations of incidental or consequential damages or exclusions or limitations of implied warranties, therefore, the above limitations or exclusions may not apply to you. This warranty gives you specific legal rights and you may also have other rights which vary from jurisdiction to jurisdiction.

## **Aging, Manufacturing, Natural Characteristics and Appearing in Printed Materials:**

Because of the varying natural characteristics of wood and the effects of ageing, product shown in displays and/or printed materials (such as product photos printed in brochures, flyers, catalogs, etc.) will not be an exact match to the cabinetry you will receive. Depending on the wood grain characteristics, the age of a sample and the environment of the retail showroom, samples will show some degree of variation from a new product. In addition, you should not expect all doors, drawer fronts, cover panels, trim or molding to match exactly in either finish or grain. Variation in wood grain is normal and unavoidable. In addition, it is not possible to exactly match our colors in printed materials. Therefore, you should view the actual samples when making your color selection. Depending on the wood grain characteristics, the age of a sample and the environment of the retail showroom, samples will show some degree of variation from a new product. In addition, you should not expect all doors, drawer fronts, cover panels, trim or molding to match exactly in either finish or grain. Variation in wood grain is normal and unavoidable. In addition, it is not possible to exactly match our colors in printed materials. Therefore, you should view the actual samples when making your color selection.

# WARRANTY

## **What This Warranty Does Not Cover:**

This warranty does not cover any problems or damage which result from improper transportation, improper installation, mishandling, misuse, abuse, neglect, abnormal use, commercial use, improper maintenance, unauthorized repairs, accidents, or acts of God, such as hurricanes, fire, earthquakes or floods. The warranty and any applicable implied warranties do not cover incidental or consequential damages arising from any defects in the product such as labor charges for installation or removal of the product or any associated products. The manufacturer is not responsible for any installation charges. This warranty does not cover defects or damage caused by normal wear and tear, alterations, environmental conditions, humidity absorption, or mold. In addition, variations in wood grain, finish color or ageing are not considered defects and are not covered by this warranty.

## **Disclaimers and Rights:**

The manufacturer disclaims any implied warranty of merchantability, and there are no express warranties other than those set forth herein. Any warranty implied by state law (whether of merchantability or fitness for a particular use or otherwise) shall be effective for any product only for the duration of the applicable limited warranty period listed above. Some states do not allow the exclusion or limitation of incidental or consequential damages, so the above limitation or exclusion may not apply to you. This warranty gives you specific legal rights, and you may also have other rights that vary from state to state.

## **How to Obtain Warranty Service:**

If you need replacement parts or would like to make a warranty claim, please contact our Customer Service Representative by email at [studiodesigncabinets@magickwoods.com](mailto:studiodesigncabinets@magickwoods.com) or call us at (855) 800-1227.

.Allwarrantyclaimsmustinclude themodel number of the product, a copy of the original receipt, and the nature of the problem. In addition, the manufacturer may at its discretion require inspection of the installation site, photography, or authorize the prepaid return of the claimed defective part. Merchandise not pre-approved for return will not be accepted and the associated claim not accepted. If upon inspection you find your product is damaged or missing parts, it is not necessary to return the unit to the store of purchase. Please contact the manufacturer.

# MINNESOTA DISCLOSURE – IMPORTANT HEALTH NOTICE

## **Manufacturer's Required Minnesota Disclosure – Important Health Notice**

Some of the building materials used in this home (or these building materials) emit formaldehyde. Eye, nose, and throat irritation, headache, nausea and a variety of asthma-like symptoms, including shortness of breath, have been reported as a result of formaldehyde exposure. Elderly persons and young children, as well as anyone with a history of asthma, allergies, or lung problems, may be at greater risk. Research is continuing on the possible long-term effects of exposure to formaldehyde.

Reduced ventilation may allow formaldehyde and other contaminants to accumulate in the indoor air. High indoor temperatures and humidity raise formaldehyde levels. When a home is to be located in areas subject to extreme summer temperatures, an air-conditioning system can be used to control indoor temperature levels. Other means of controlled mechanical ventilation can be used to reduce levels of formaldehyde and other indoor air contaminants.

If you have any questions regarding the health effects of formaldehyde, consult your doctor or local health department.